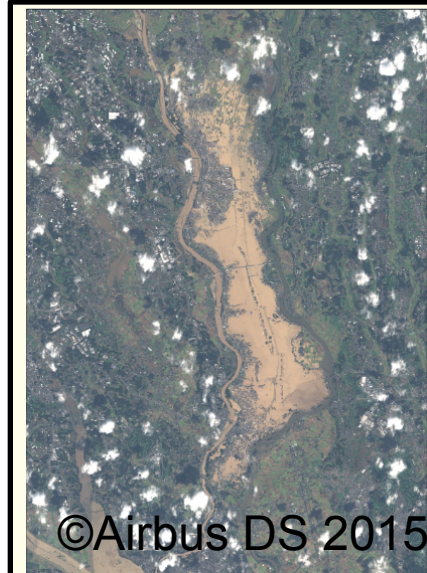


# Major disasters and Amount of disaster waste

**Jan. 17, 1995 Great Hanshin-Awaji Earthquake**  
**Approx. 15 mil ton**



Photographed on Sep. 11

**Mar. 11, 2011 Great East Japan Earthquake**  
**Approx. 31 mil ton**

**Oct. 16, 2013 Typhoon No.26 (Landslide)**  
**Oshima, Tokyo Pref.**  
**Approx. 0.23 mil ton**

**Aug. 6, 2014 Heavy Rain (Landslide)**  
**Hiroshima City**  
**Approx. 0.58 mil ton**

**Sept. 2015 (Heavy Rain and flood)**  
**Kanto and Tohoku area**  
**Approx. 0.1 mil ton**

